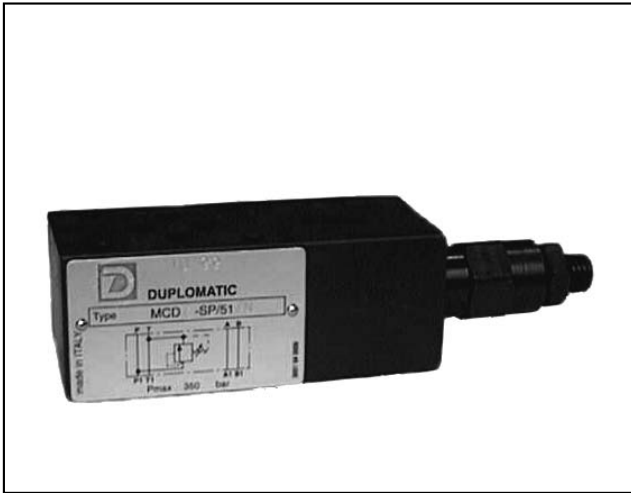




DIPLOMATIC
HYDRAULICS

61 200/104 ED



MCD

DIRECT OPERATED PRESSURE RELIEF VALVE SERIES 51

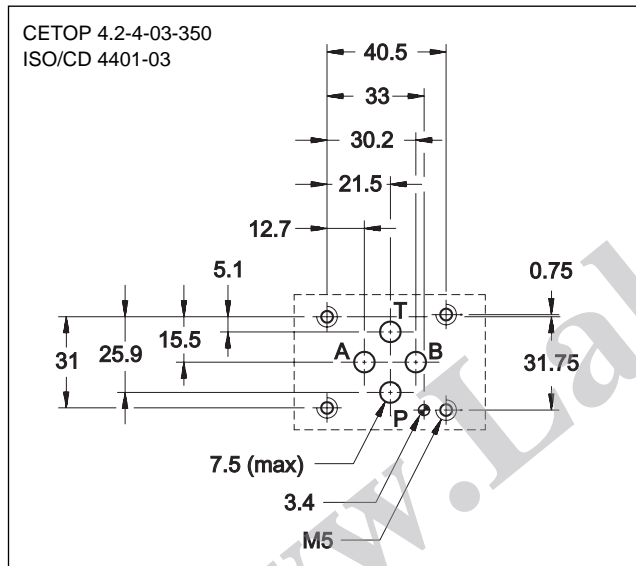
MODULAR VERSION

CETOP 03

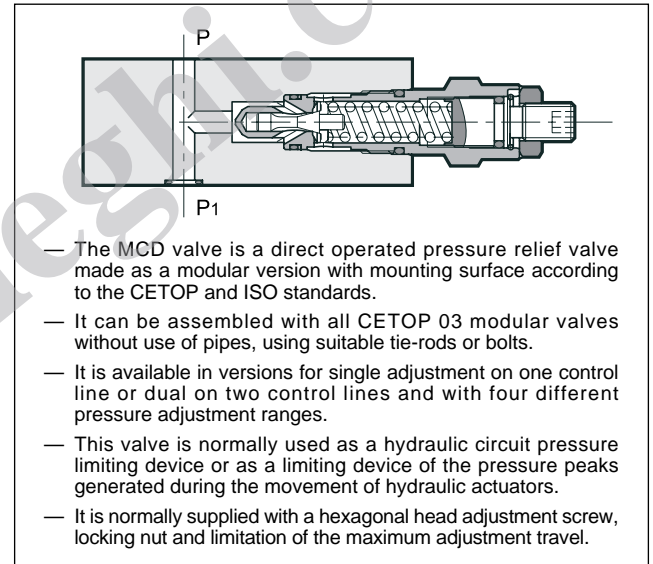
p max 350 bar

Q max (see performance ratings table)

MOUNTING INTERFACE



OPERATING PRINCIPLE



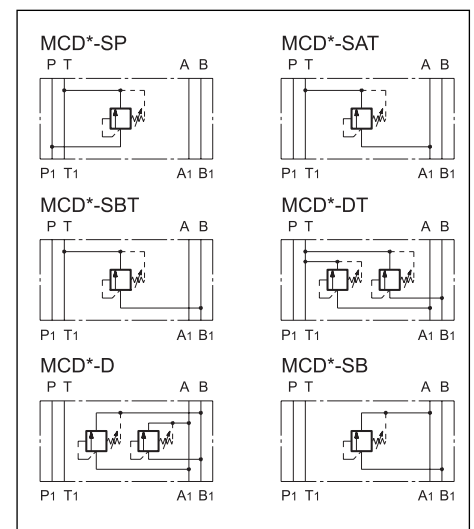
CONFIGURATIONS (see Hydraulic symbols table)

- Configuration "SP": controls the pressure on line P with discharge in T.
- Configuration "SAT": controls the pressure on line A with discharge in T.
- Configuration "SBT": controls the pressure on line B with discharge in T.
- Configuration "DT": controls the pressure on lines A-B with discharge in T.
- Configuration "D": controls the pressure on lines A-B with crossed discharges
- Configuration "SB": controls the pressure on line B with discharge in A.

PERFORMANCE RATINGS (measured with mineral oil of viscosity 36cSt at 50°C)

Maximum operating pressure	bar	350
Minimum controlled pressure	see Δp -Q diagram	
Maximum flow rate in the controlled lines	l/min	50
Maximum flow rate in the free lines	l/min	75
Ambient temperature range	°C	-20 ÷ +50
Fluid temperature range	°C	-20 ÷ +80
Fluid viscosity range	cSt	10 ÷ 400
Recommended viscosity	cSt	25
Degree of fluid contamination	According to NAS 1638 class 10	
Mass: MCD - SP / MCD - SAT / MCD - SBT / MCD - SB	kg	1,4
MCD - DT / MCD - D	kg	2,0

HYDRAULIC SYMBOLS





1 - IDENTIFICATION CODE

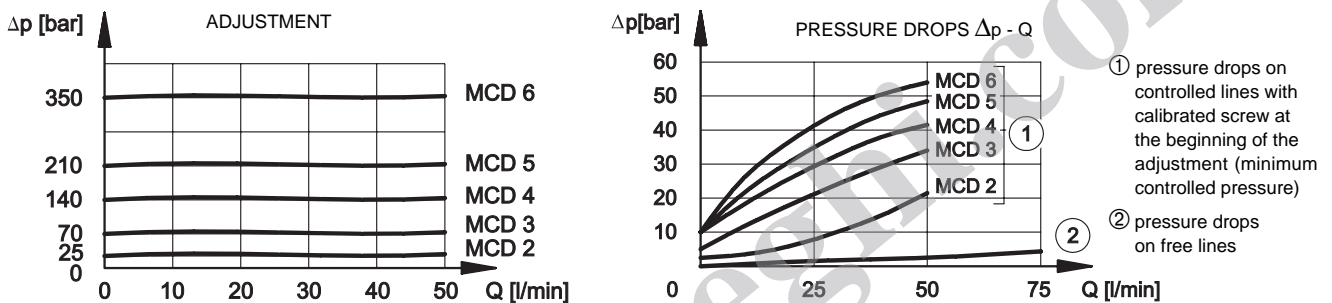
M	C	D	-	/ 51	/
----------	----------	----------	----------	-------------	----------

CETOP 03 size
 Modular version
 Direct operated pressure relief valve
 Pressure adjustment range
 2 = up to 25 bar 5 = up to 210 bar
 3 = up to 70 bar 6 = up to 350 bar
 4 = up to 140 bar

Configurations:
SP: single on line P with discharge in T
SAT: single on line A with discharge in T
SBT: single on line B with discharge in T
DT: double on lines A-B with discharge in T
D: double on lines A-B with crossed discharges
SB: single on line B with discharge in A

omit for adjustment with countersunk hex screw - **standard**
K = Adjustment knob
 Seals:
N = NBR seals for mineral oils (**standard**)
V = FPM seals for special fluids
 Series No. (the overall and mounting dimensions remain unchanged from 50 to 59)

2 - CHARACTERISTIC CURVES (values obtained with viscosity of 36 cSt at 50°C)



3 - HYDRAULIC FLUIDS

Use mineral oil-based hydraulic fluids, with the addition of suitable anti-frothing and anti-oxidizing agents. For the use of other types (water glycol, phosphate esters and others), please consult our technical department.

4 - OVERALL AND MOUNTING DIMENSIONS

dimensions in mm

1	Locking nut: spanner 19
2	Countersunk hex adjustment screw: spanner 6 (standard) Rotate clockwise to increase pressure
3	Mounting surface with sealing rings: 4 OR type 2037
4	Adjustment knob: K
5	Locking ring



DUPLOMATIC OLEODINAMICA SpA
 20025 LEGNANO (MI) - P.le Bozzi, 1 / Via Edison
 Tel. 0331/472111 - Fax 0331/548328